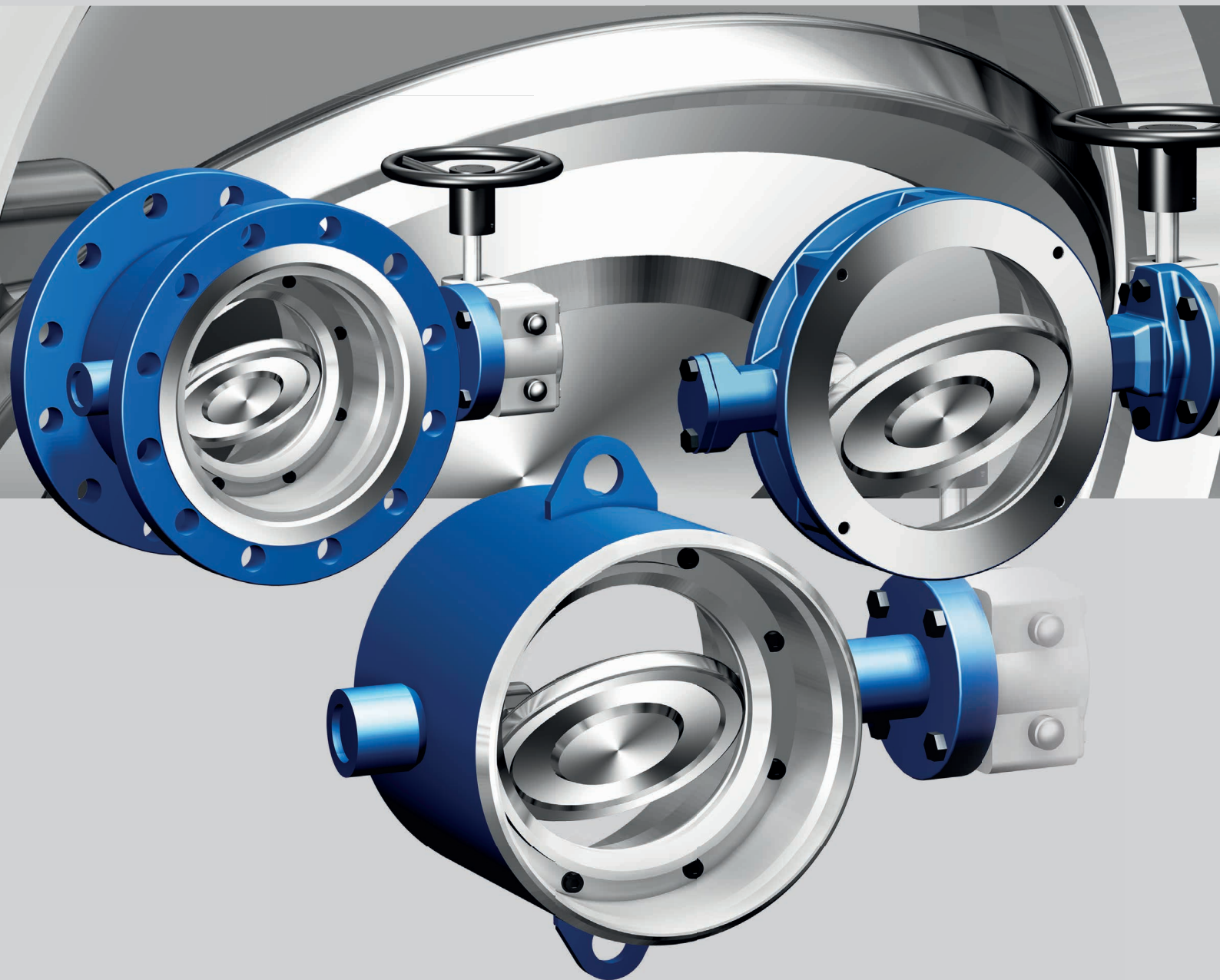


# ZEDOX®

## The High Performance-Valve

DOUBLE ECCENTRIC, METALLIC SEALING

NEW from ARI!



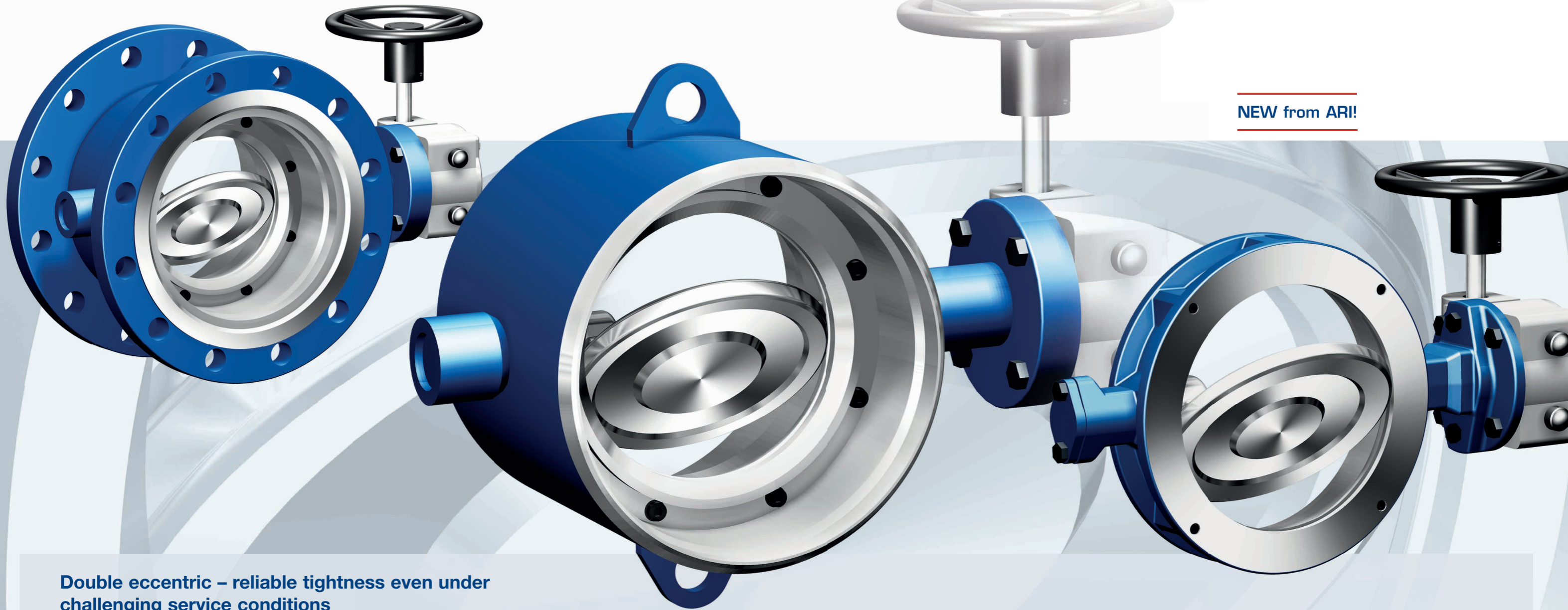
# ZEDOX®

The High Performance-Valve

# ZEDOX®

Your Economical Alternative – For Demanding Applications

NEW from ARI!

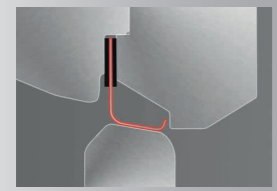


## Double eccentric – reliable tightness even under challenging service conditions

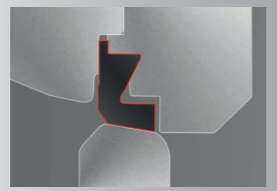
In contrast to centric butterfly valves, the double-eccentric sealing principle of the new ZEDOX® (double shift of the pivot point) reduces the angle of the disc when it enters into contact with the seat sealing ring and relieves that metallic sealing when opening. Your advantages:

- Functional safety even under challenging service conditions (reliably tight at temperatures from -40°C to +260°C (max. +400°C), PN 10 to PN 40 as well as Class 150)

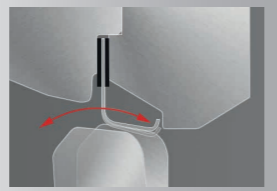
- By reducing the contact pressure and minimizing friction, ZEDOX® offers a long service-life.
- The streamlined bearing and shape of the valve-disc stands for a high-energy efficiency.
- The protection of the seat-sealing ring against the influence of negative medium flow creates a long service-life of the ZEDOX®
- The low torques guarantee a perfect handling.



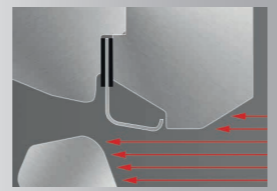
Tight sealing up to max. +260°C with metallic sealing ring



Tight sealing up to max. +180°C with PTFE sealing ring

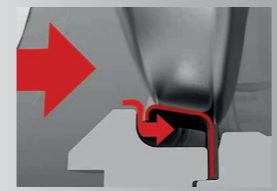


Minimized friction via reduced contact pressure of the disc and the metallic sealing ring



The protection of the seat sealing ring against the influence of negative medium flow creates a long service life of the ZEDOX®

- Easily automated via actuation interface acc. to ISO 5211
- ZEDOX® accomplishes leakage rate A acc. to EN 12266, API 598 (bi-directional), soft-sealing (type TS), metallic-sealing (type CS) with leakage rate B (optional rate A).
- Blow-out proof shaft provides extra safety
- Pressure-temperature rating acc. EN 1092, company standard
- Approvals acc. Firesafe, ATEX



### Bi-directional tightness

The medium-pressure supports the flexible metal sealing-ring to follow the disc during the transition to be compressed in a way that it is almost equal to both flow directions.



## Performance features at a glance:

- **Design:** EN 12516, PED, API 609
- **Flange connection:**\* EN 1092, ASME 16.5, ASME 16.47, GOST
- **Butt-weld ends:**\* DIN EN 12627, ASME B16.25, GOST
- **Nominal diameter:**\*
  - Double flange: DN 200-1200 / 8" bis 48"
  - Fully lugged: DN 80-800 / 3" bis 32"
  - Butt-weld ends: DN 200-1600 / 8" bis 64"
- **Nominal pressure:**\* PN 10-40 / Class 150
- **Material:**\*
  - Cast carbon steel (1.0619 +N; SA216WCB)
  - Cast stainless steel (1.4408; SA351CF8M)
- **Temperature:**\* -40°C bis +260°C (max. +400°C)
- **Flow media:** Liquids, gases, vapours
- **Actuators:** Manual gearbox, pneumatic, electric, hydraulic drives

\*Other designs on request

# ARI product diversity

## Control



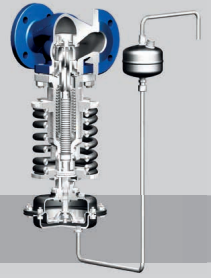
**Control valves**  
STEVI® Pro  
(BR 422/462, 470/471)



STEVI® Vario  
(BR 448/449)



STEVI® Smart (BR 423/463,  
425/426, 440/441, 450/451)



**Control without auxiliary power**  
PREDU® / PREDEX® /  
PRESO® / TEMPTRÖL®

## Isolation



**Process Valves**  
ZETRIX®  
**High Performance-Valves**  
ZEDOX®



**Butterfly valves**  
ZESA®/GESA®/ZIVA®



**Bellows sealed valves**  
FABA® Plus, FABA® Supra I/C



**Stop valves with gland seal**  
STOBU®

## Safety



**Safety valves (DIN)**  
SAFE



**Safety valves**  
SAFE TCP



**Safety valves (API 526)**  
REYCO®



**Safety valves (ANSI)**  
REYCO® RL-series

## Steam trapping



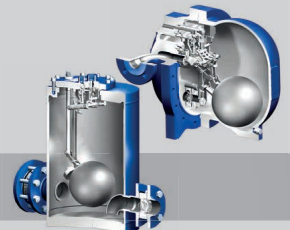
**Steam traps CONA®**  
(mechanical ball float /  
thermostatic bimetallic and  
membrane / thermodynamic), **monitoring systems**  
CONA® Control



**Manifolds**  
CODI® for collecting  
and diverting purpose



**Steam traps with multi-  
valving technology CONA®**  
"All-in-One" (incl. stop valve,  
inside strainer, back-flow  
protection, drain valve)

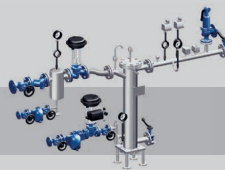


**Mechanical pump systems**  
CONALIFT®, CONA® P

## Application technology



e.g. pressure reducing station  
PREsys®



e.g. heat exchanger  
ENCOsys®



e.g. condensate return  
system CORsys®



e.g. feedwater tank  
with deaerator dome



**Profit from diversity made by ARI.**

**Please don't hesitate to ask for more information!**

[www.ari-armaturen.com](http://www.ari-armaturen.com)